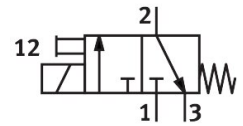
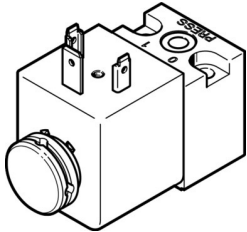


Pilot valve MDH-3/2-230VAC

Part number: 119602

FESTO



[General operating condition](#)

Data sheet

Feature	Value
Valve function	3/2, closed, monostable
Actuation type	Electrical
Width	30 mm
Standard nominal flow rate	50 l/min
Pneumatic working port	Sub-base, size 30 mm as per ISO 15218
Operating voltage	110V DC 230V AC
Operating pressure	0.1 MPa ... 1.6 MPa
Operating pressure	1 bar ... 16 bar
Operating pressure	14.5 psi ... 232 psi
Structural design	Plate seat
Reset method	Mechanical spring
CE marking (see declaration of conformity)	As per EU low voltage directive
UKCA marking (see declaration of conformity)	To UK instructions for electrical equipment
Degree of protection	IP65
Nominal width	1.3 mm
Width dimension	42 mm
Exhaust air function	Without flow control option
Based on norm	ISO 15218
Sealing principle	Soft
Mounting position	Any
Conforms to standard	ISO 15218
Manual override	Non-detenting
Type of control	Direct
Flow direction	Non-reversible
Symbol	00991308
Lap	Underlap
Switching time off	9 ms
On switching time	11 ms
Duty cycle	100%
Coil characteristics	110 V DC: 6.3 W 230 V AC: 50 Hz, initial power 14.5 VA, holding power 10.5 VA 230 V AC: 60 Hz, initial power 12.0 VA, holding power 7.6 VA
Permissible frequency fluctuations	+/- 10%
Permissible voltage fluctuations	+/- 10%
Operating medium	Compressed air as per ISO 8573-1:2010 [7:4:4]

Feature	Value
Information on operating and pilot media	Operation with oil lubrication possible (required for further use)
Corrosion resistance class (CRC)	2 - Moderate corrosion stress
LABS (PWIS) conformity	VDMA24364-B2-L
Temperature of medium	-15 °C ... 80 °C
Ambient temperature	-15 °C ... 50 °C
Product weight	140 g
Electrical connection	Form A as per DIN EN 175301-803
Type of mounting	With through-hole
Pneumatic connection 1	Sub-base
Pneumatic connection 2	Sub-base
Pneumatic connection 3	Not ducted
Note on materials	RoHS-compliant
Seals material	FPM