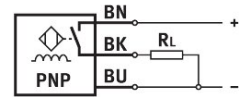
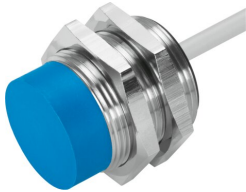


Proximity sensor SIEN-M30NB-PS-K-L

Part number: 150442

FESTO



[PDF](#) General operating condition

Data sheet

Feature	Value
Conforms to standard	EN 60947-5-2
Symbol	00991702
Certification	RCM compliance mark c UL us - Listed (OL)
CE marking (see declaration of conformity)	As per EU EMC directive As per EU RoHS directive
UKCA marking (see declaration of conformity)	as per UK instructions for EMC (UK-E) as per UK RoHS instructions (UK-R)
Note on materials	RoHS-compliant
Rated operating distance	15 mm
Assured operating distance	12.15 mm
Reduction factors	Aluminum = 0.5 Stainless steel St 18/8 = 0.85 Copper = 0.43 Brass = 0.53 Steel St 37 = 1.0
Ambient temperature	-25 °C ... 70 °C
Repetition accuracy	0.75 mm
Switching output	PNP
Switching element function	N/O contact
Hysteresis	≤1.65 mm
Max. switching frequency	700 Hz
Max. output current	200 mA
Voltage drop	≤2 V
Short-circuit protection	Pulsed
DC operating voltage range	11 V ... 30 V
Residual ripple	+/- 20 %
Idle current	≤10 mA
Reverse polarity protection	for all electrical connections
Electrical connection 1, connection type	Cable
Electrical connection 1, connection technology	Open end
Electrical connection 1, number of pins/wires	3
Cable length	2.5 m
Material of cable sheath	TPE-U(PUR)
Size	M30x1.5
Type of mounting	With lock nut
Tightening torque	40 Nm
Mounting type	Not flush

Feature	Value
Product weight	150 g
Housing material	PBTP Chrome-plated
Switching status indication	LED yellow
Ambient temperature with flexible cable installation	-5 °C ... 70 °C
Degree of protection	IP67
Surge resistance	0.8 kV
LABS (PWIS) conformity	VDMA24364-B2-L
Contamination level	3
Selection of additional sensor information	With standard switching distance
Electrical output	PNP
Selection of sensor version	Standard