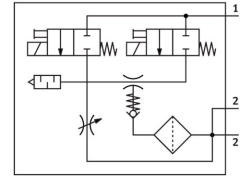



Vacuum generator VADMI-140

Part number: 162509

FESTO



 General operating condition

Data sheet

| Feature | Value |
|--|---|
| Nominal width of Laval nozzle | 1.4 mm |
| Width dimension | 22 mm |
| Muffler construction type | Closed |
| Mounting position | Any |
| Ejector characteristics | High vacuum |
| Grade of filtration | ≤40 µm |
| Manual override | Non-detenting |
| Integrated function | Ejector pulse valve, electric Flow control On/off valve, electric Filter Non-return valve |
| Symbol | 00991305 |
| Valve function | Closed |
| Operating pressure | 0.2 MPa ... 0.8 MPa |
| Operating pressure | 2 bar ... 8 bar |
| Operating pressure | 29 psi ... 116 psi |
| Max. vacuum | 85 % |
| Nominal operating pressure | 0.6 MPa |
| Nominal operating pressure | 6 bar |
| Nominal operating pressure | 87 psi |
| Air supply time at nominal operating pressure with ejector pulse | 0.19 s |
| DC operating voltage range | 21.6 V ... 26.4 V |
| Duty cycle | 100% |
| Certification | c UL us - Recognized (OL) |
| Operating medium | Compressed air as per ISO 8573-1:2010 [7:4:4] |
| Information on operating and pilot media | Operation with oil lubrication not possible |
| Corrosion resistance class (CRC) | 2 - Moderate corrosion stress |
| LABS (PWIS) conformity | VDMA24364-B1/B2-L |
| Temperature of medium | 0 °C ... 60 °C |
| Degree of protection | IP65 |
| Ambient temperature | 0 °C ... 60 °C |
| Product weight | 320 g |
| Electrical connection | Plug |
| Type of mounting | With through-hole With internal thread |

| Feature | Value |
|--------------------------------|------------------------------|
| Pneumatic connection 1 | G1/8 |
| Pneumatic connection 3 | Pneumatic muffler integrated |
| Vacuum connection | G1/4 |
| Note on materials | RoHS-compliant |
| Seals material | NBR |
| Female nozzle material | Brass, nickel-plated |
| Compressed air filter material | PA |
| Material of filter housing | PC |
| Housing material | Wrought aluminum alloy |
| Muffler material | PE POM |
| Material of piston | POM |
| Material of jet nozzle | Brass, nickel-plated |