

MLFB-Ordering data 1FG1203-1QD22-2AJ1-Z  
D01+K06

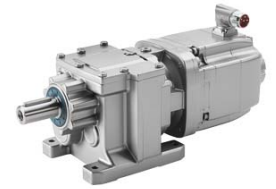


Figure similar

Client order no. :

Order no. :

Offer no. :

Remarks :

Item no. :

Consignment no. :

Project :

### Gearbox data

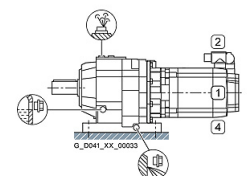
Gear box type	D39	Radial force maximum	4370 N
Gearbox basic type	Helical geared	Max. permissible radial force with Mmax	3990 N
Gearbox size	39	Moment of inertia	0.14 kgcm <sup>2</sup>
Transmission stages	3	Torsional stiffness	13 Nm/°
Transmission (ratio)	100.44	Efficiency	0.89
Gear number relation	93912/935	Mounting position	M1
Output moment maximum (short-time)	215 Nm	Mounting type	Foot-mounted
max. input speed (briefly)	4500 rpm	Output shaft version	Solid shaft standard
Output speed short-time	45 rpm	Output shaft dimension	V25x50 mm
Emergency off output moment (1000 cycles)	340 Nm	Gearbox flange diameter	-/-
		Output shaft bearing	No
		Figure 2 torque support	-

### General tech. specifications

Degree of protection	IP65
Color of the housing	Standard painting (Anthracite RAL 7016)
Specification	CE / UL / CSA / EAC / cRUus
Net weight	11.18 kg
1m-sound pressure level L <sub>pA</sub> (ToI.+3dB(A))	65
Plug position	top (default) (2)
Adapter flange position	top (default) (2)

### Lubrication and sealing

Gear oil	Mineral oil CLP ISO VG220
Output shaft sealing	Standard
Oil charge	0.25 l



MLFB-Ordering data 1FG1203-1QD22-2AJ1-Z  
D01+K06

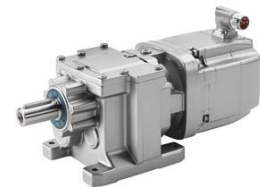


Figure similar

Motor data		Limiting data	
Motor type	Permanent-magnet synchronous motor	Maximum speed (short-time)	9000 rpm
Motor type	Compact	Maximum torque	10.50 Nm
DC-link voltage, max.	510...720V	Motor current short term	5.6 A
Shaft height	48 mm	<b>Optimum operating point</b>	
Cooling	Natural cooling	Optimum speed	2000 rpm
Rated speed	2000 rpm	Optimum power	0.53 kW
Rated torque (100K)	2.50 Nm	<b>Recommended Motor Module</b>	
Rated power	0.52 kW	Rated inverter current	3.0 A
Rated current (100K)	1.45 A	Maximum inverter current	9.0 A
Static torque	2.85 Nm	Maximum torque	10.5 Nm
Static current	1.55 A		
Moment of inertia	2.90 kgcm <sup>2</sup>		
Efficiency $\eta$	89 %		
Temperature monitoring	Pt1000 temperature sensor		
Connector size	1		
Encoder system	Encoder AS20DQI: absolute encoder single-turn 20 bits		

### Info servo geared motor

Outside the standard temperature range of -10 to +40 °C, further selectable options must be observed, in addition to the lubricant selection.

Further, you have to check the suitability of the components and options used for the requested temperature range.

MLFB-Ordering data 1FG1203-1QD22-2AJ1-Z  
D01+K06

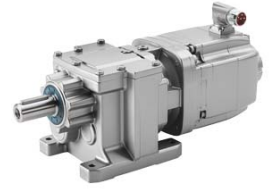


Figure similar

### Options

D01	M1 for helical and parallel shaft gearboxes
K06	Mineral oil CLP ISO VG220

### Standards

**Compliance with standards** CE / UL / CSA / EAC / cRUus

**CE marking** EN 60034