

MLFB-Ordering data 1FG1501-1QD23-1AG1-Z  
D21+G23+K07+Q93

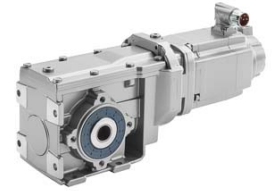


Figure similar

Client order no. :

Order no. :

Offer no. :

Remarks :

Item no. :

Consignment no. :

Project :

### Gearbox data

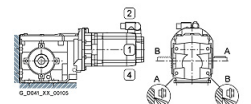
Gear box type	B29	Radial force maximum	3270 N
Gearbox basic type	Bevel geared	Max. permissible radial force with Mmax	3320 N
Gearbox size	29	Moment of inertia	0.43 kgcm <sup>2</sup>
Transmission stages	2	Torsional stiffness	12 Nm/°
Transmission (ratio)	7.38	Efficiency	0.93
Gear number relation	1380/187	Mounting position	M1-B
Output moment maximum (short-time)	72 Nm	Mounting type	Foot-mounted
max. input speed (briefly)	4500 rpm	Output shaft version	Solid shaft standard
Output speed short-time	610 rpm	Output shaft dimension	V20x40 mm
Emergency off output moment (1000 cycles)	127 Nm	Gearbox flange diameter	-/-
		Output shaft bearing	No
		Figure 2 torque support	-

### General tech. specifications

Degree of protection	IP65
Color of the housing	Standard painting (Anthracite RAL 7016)
Specification	CE / UL / CSA / EAC / cRUus
Net weight	10.39 kg
1m-sound pressure level L <sub>pA</sub> (ToI.+3dB(A))	65
Plug position	left (3)
Adapter flange position	top (default) (2)

### Lubrication and sealing

Gear oil	Polyglycol oil CLP ISO PG VG220
Output shaft sealing	Seal longer service life
Oil charge	0.25 l



MLFB-Ordering data 1FG1501-1QD23-1AG1-Z  
D21+G23+K07+Q93



Figure similar

Motor data		Limiting data	
Motor type	Permanent-magnet synchronous motor	Maximum speed (short-time)	9000 rpm
Motor type	Compact	Maximum torque	10.50 Nm
DC-link voltage, max.	270...300V	Motor current short term	13.8 A
Shaft height	48 mm	<b>Optimum operating point</b>	
Cooling	Natural cooling	Optimum speed	3000 rpm
Rated speed	3000 rpm	Optimum power	0.74 kW
Rated torque (100K)	2.35 Nm	<b>Recommended Motor Module</b>	
Rated power	0.74 kW	Rated inverter current	3.9 A
Rated current (100K)	3.35 A	Maximum inverter current	7.8 A
Static torque	2.85 Nm	Maximum torque	6.0 Nm
Static current	3.85 A		
Moment of inertia	2.90 kgcm <sup>2</sup>		
Efficiency $\eta$	89 %		
Temperature monitoring	Pt1000 temperature sensor		
Connector size	1		
Encoder system	Encoder AS20DQI: absolute encoder single-turn 20 bits		

### Info servo geared motor

Outside the standard temperature range of -10 to +40 °C, further selectable options must be observed, in addition to the lubricant selection.

Further, you have to check the suitability of the components and options used for the requested temperature range.

MLFB-Ordering data 1FG1501-1QD23-1AG1-Z  
D21+G23+K07+Q93

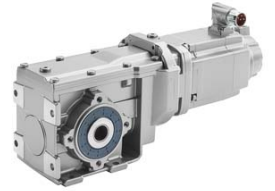


Figure similar

### Options

D21	M1-B for bevel and worm gearboxes
G23	Seal longer service life
K07	Polyglycol oil CLP ISO PG VG220
Q93	Plug position left

### Standards

**Compliance with standards** CE / UL / CSA / EAC / cRUus

**CE marking** EN 60034