

CH20M12 S PPSC AGY 3747

Weidmüller Interface GmbH & Co. KG

Klingenbergstraße 26

D-32758 Detmold

Germany

www.weidmueller.com

Product image



Superior efficiency, flexibility and design - the "standard tailor-made fit"

When selecting a housing design, flexibility is a key factor. Other important criteria are: scalability, customized design, innovative functionality and cost efficiency. You need a choice which offers the maximum performance with the minimum overhead.

The CH20M12 modular electronics housing is the "small" option amongst the "large" housing solutions for compact electronics applications.

The entire system is characterized by excellence: outstanding scalability and flexibility, a high security level, innovative application functionality and a variety of practical details.

- **Quicker installation** with features such as "Wire ready" the universal multi-tool screw head
- **User-friendly operations:** with clear and permanent labelling and extra marking possibilities, integrated release clip or transparent cover
- **Maximum interference immunity** with EMC-compliant construction featuring deeply overlapping module joint edges made from high-performance plastic
- **High operational reliability** with the unique Auto-Set coding system and featuring double-sided touch protection on the pin header and socket blocks

CH20M - a compact name for the most flexible system available on the market. It doesn't just stand for "Component Housing IP20 Modular".

CH20M also stands for efficiency and innovation throughout design, production and use.

General ordering data

Version	Modular housing, OMNIMATE Housing - series CH20M Agate grey, Width: 12.5 mm
Order No.	2554860000
Type	CH20M12 S PPSC AGY 3747
GTIN (EAN)	4050118564853
Qty.	14 pc(s).
Information regarding whole assembly, see referenced articles	1104180000

CH20M12 S PPSC AGY 3747

Weidmüller Interface GmbH & Co. KG
 Klingenbergstraße 26
 D-32758 Detmold
 Germany

www.weidmueller.com

Technical data

Dimensions and weights

Height	22.83 mm	Height (inches)	0.899 inch
Length	105.49 mm	Length (inches)	4.153 inch
Net weight	7 g	Width	12.5 mm
Width (inches)	0.492 inch		

Temperatures

Operating temperature range	-40 °C...120 °C	Installation temperature	-25 °C...85 °C
Humidity	5 - 93% rel. humidity, Tu = 40°C, no condensation		

Component Properties

Cut out as preparation for functional port integrated	No	Number of connection levels	2
Number of cooling levels	1	Number of poles, max.	4

General data

Colour	Agate grey	Colour chart (similar)	RAL 7038
Encapsulation option	No	Protection degree	IP20

Material data

Comparative Tracking Index (CTI)	≤ 600	Insulating material	PA 66 GF 30
Insulating material group	I	UL 94 flammability rating	V-0

Classifications

ETIM 6.0	EC001031	ETIM 7.0	EC001031
ECLASS 9.0	27-18-27-90	ECLASS 9.1	27-18-27-90
ECLASS 10.0	27-18-27-92	ECLASS 11.0	27-18-27-92

Approvals

ROHS	Conform
------	---------

Downloads

Engineering Data	STEP
Engineering Data	EPLAN
Brochure/Catalogue	Catalogues in PDF-format

Data sheet

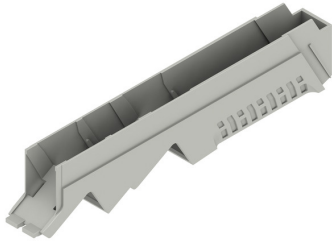
CH20M12 S PPSC AGY 3747

Weidmüller Interface GmbH & Co. KG
Klingenbergstraße 26
D-32758 Detmold
Germany

www.weidmueller.com

Drawings

Product image



Product image

