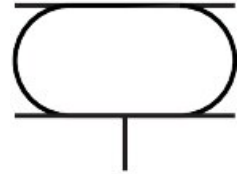



Bellow cylinder EB-215-155

Part number: 36492

FESTO



 [General operating condition](#)

Data sheet

Feature	Value
Size	215
Required installation Ø	230 mm
Stroke	155 mm
Max. height, advanced	230 mm
Max. angle of inclination	30 deg
Max. offset	20 mm
Min. installation height	75 mm
Mode of operation	Single-acting
Symbol	00991205
Operating pressure	0 bar ... 8 bar
Operating medium	Compressed air as per ISO 8573-1:2010 [:::4]
Information on operating and pilot media	Operation with oil lubrication not possible
Corrosion resistance class (CRC)	2 - Moderate corrosion stress
LABS (PWIS) conformity	VDMA24364-B1/B2-L
Ambient temperature	-40 °C ... 70 °C
Resetting force	200 N
Product weight	2300 g
Type of mounting	With internal thread
Pneumatic connection	G3/4
Note on materials	RoHS-compliant
Bellows material	NR/BR
Housing material	Steel Galvanized