

OVERLOAD RELAY 6...25 A FOR MOTOR PROTECTION SIZE S0,  
CLASS 10 CONTACTOR ASS. MAIN CIRCUIT: SCREW CONN.  
AUX.CIRCUIT: SCREW CONN. MANUAL-AUTOM.-RESET



product brand name	SIRIUS
Product designation	solid-state overload relay
<b>General technical data:</b>	
Size of overload relay	S0
Size of contactor can be combined company-specific	S0
Active power loss total typical	1.2 W
Insulation voltage with degree of pollution 3 Rated value	690 V
Surge voltage resistance Rated value	6 kV
Protection class IP	
• on the front	IP20
• of the terminal	IP20
Vibration resistance	1-6 Hz, 15 mm; 6-500 Hz, 20 m/s <sup>2</sup> ; 10 cycles
Type of assignment	2
Type of protection	II (2) G [Ex e] [Ex d] [Ex px] II (2) D [Ex t] [Ex p]
Certificate of suitability relating to ATEX	PTB 09 ATEX 3001
Protection against electrical shock	finger-safe
Equipment marking	
• acc. to DIN EN 61346-2	F

- acc. to DIN EN 81346-2

F

#### Ambient conditions:

<b>Installation altitude at height above sea level maximum</b>	2 000 m
<b>Ambient temperature</b>	
• during operation	-25 ... +60 °C
• during storage	-40 ... +80 °C
• during transport	-40 ... +80 °C
<b>Relative humidity during operation</b>	95 %

#### Main circuit:

<b>Number of poles for main current circuit</b>	3
<b>Adjustable response value current of the current-dependent overload release</b>	6 ... 25 A
<b>Operating voltage</b>	
• at AC-3 Rated value maximum	690 V
<b>Operating frequency Rated value</b>	50 ... 60 Hz
<b>Operating current</b>	
• at AC-3	
— at 400 V Rated value	25 A

#### Auxiliary circuit:

<b>Number of NC contacts</b>	
• for auxiliary contacts	1
— Note	for contactor disconnection
<b>Number of NO contacts</b>	
• for auxiliary contacts	1
— Note	for message "tripped"
<b>Number of CO contacts</b>	
• for auxiliary contacts	0
<b>Design of the auxiliary switch</b>	integrated
<b>Operating current of the auxiliary contacts at AC-15</b>	
• at 24 V	4 A
• at 110 V	4 A
• at 120 V	4 A
• at 125 V	4 A
• at 230 V	3 A
<b>Operating current of the auxiliary contacts at DC-13</b>	
• at 24 V	2 A
• at 60 V	0.55 A
• at 110 V	0.3 A
• at 125 V	0.3 A
• at 220 V	0.11 A

**UL/CSA ratings:**

<b>Contact rating of the auxiliary contacts acc. to UL</b>	B600 / R300
--	-------------

**Short-circuit:****Design of the fuse link**

- for short-circuit protection of the main circuit
  - required
- for short-circuit protection of the auxiliary switch required

Fuse gG: 63 A  
fuse gG: 6 A

**Installation/ mounting/ dimensions:**

<b>mounting position</b>	any
<b>Mounting type</b>	direct mounting
<b>Height</b>	87 mm
<b>Width</b>	45 mm
<b>Depth</b>	84 mm
<b>Required spacing</b>	
<ul style="list-style-type: none"> <li>• with side-by-side mounting           <ul style="list-style-type: none"> <li>— forwards</li> <li>— Backwards</li> <li>— upwards</li> <li>— downwards</li> <li>— at the side</li> </ul> </li> <li>• for grounded parts           <ul style="list-style-type: none"> <li>— forwards</li> <li>— Backwards</li> <li>— upwards</li> <li>— at the side</li> <li>— downwards</li> </ul> </li> <li>• for live parts           <ul style="list-style-type: none"> <li>— forwards</li> <li>— Backwards</li> <li>— upwards</li> <li>— downwards</li> <li>— at the side</li> </ul> </li> </ul>	<p>0 mm 0 mm 0 mm 0 mm 0 mm</p> <p>6 mm 0 mm 6 mm 6 mm 6 mm</p> <p>6 mm 0 mm 6 mm 6 mm 6 mm</p>

**Electromagnetic compatibility:**

<b>Conducted interference due to burst acc. to IEC 61000-4-4</b>	2 kV (power ports), 1 kV (signal ports) corresponds to degree of severity 3
<b>Conducted interference due to conductor-earth surge acc. to IEC 61000-4-5</b>	2 kV (line to earth) corresponds to degree of severity 3
<b>Conducted interference due to conductor-conductor surge acc. to IEC 61000-4-5</b>	1 kV (line to line) corresponds to degree of severity 3
<b>Field-bound parasitic coupling acc. to IEC 61000-4-3</b>	10 V/m

Electrostatic discharge acc. to IEC 61000-4-2	6 kV contact discharge / 8 kV air discharge
Display version	Slide switch
<ul style="list-style-type: none"> <li>for switching status</li> </ul>	

Certificates/ approvals:

General Product Approval	EMC	For use in hazardous locations
--------------------------	-----	--------------------------------



Declaration of Conformity	Test Certificates	Shipping Approval
---------------------------	-------------------	-------------------



EG-Konf.

[Typprüfbescheinigung/Werkszeugnis](#)

[spezielle Prüfbescheinigungen](#)



ABS



BUREAU VERITAS



GL

Shipping Approval	other
-------------------	-------



LRS



RINA

[Umweltbestätigung](#)

[Bestätigungen](#)

Further information

**Information- and Downloadcenter (Catalogs, Brochures,...)**

<http://www.siemens.com/industrial-controls/catalogs>

**Industry Mall (Online ordering system)**

<http://www.siemens.com/industrymall>

**Cax online generator**

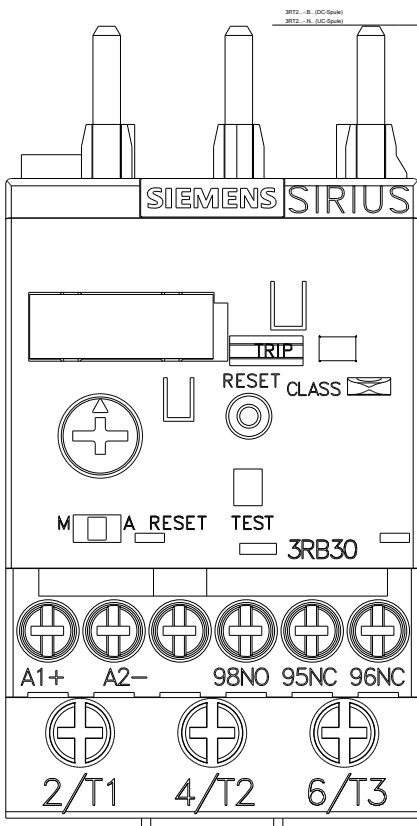
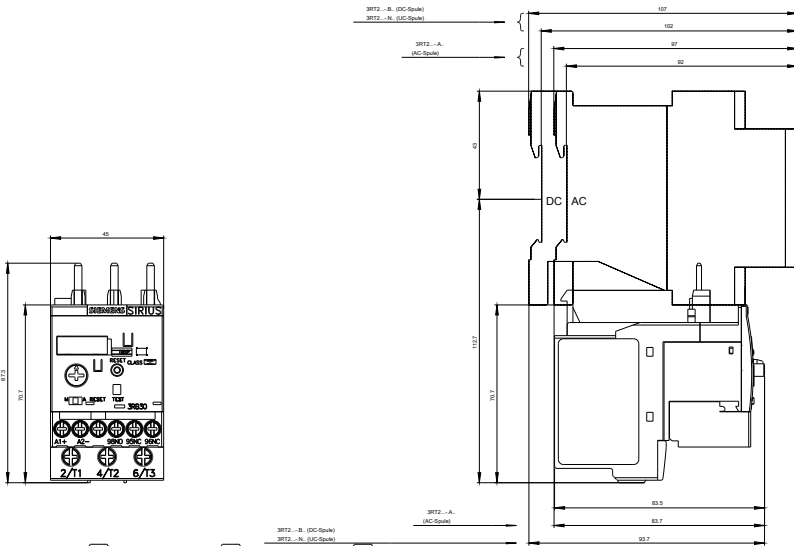
<http://support.automation.siemens.com/WW/CAXorder/default.aspx?lang=en&mlfb=3RB30261QB0>

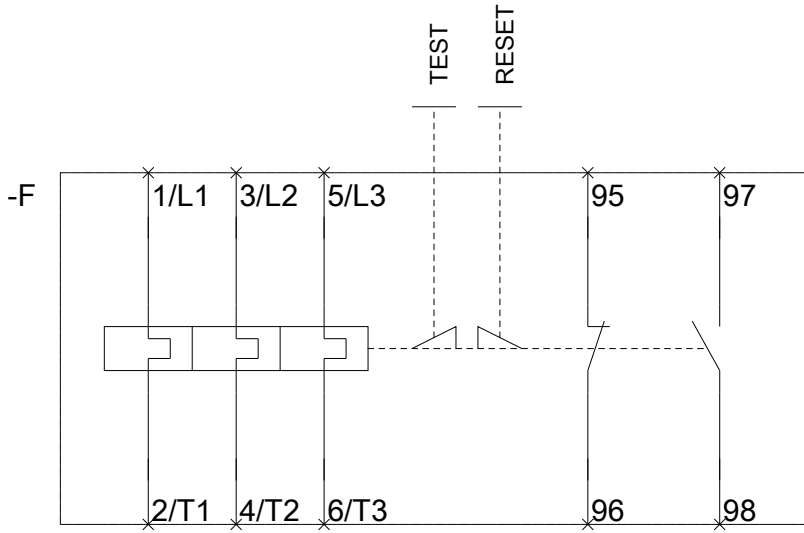
**Service&Support (Manuals, Certificates, Characteristics, FAQs,...)**

<https://support.industry.siemens.com/cs/ww/en/ps/3RB30261QB0>

**Image database (product images, 2D dimension drawings, 3D models, device circuit diagrams, EPLAN macros, ...)**

[http://www.automation.siemens.com/bilddb/cax\\_de.aspx?mlfb=3RB30261QB0&lang=en](http://www.automation.siemens.com/bilddb/cax_de.aspx?mlfb=3RB30261QB0&lang=en)





last modified:

10.08.2015