



SHUNT TRIP AC 210...240V,50/60HZ,
100% ED, DC 190...330V, 5SEC ED,
AC 190...330V,50/60HZ, 5SEC ED,
FOR S00...S3,

Certificates/approvals:

General Product Approval



CSA



UL



EG-Konf.

Declaration of Conformity

Test Certificates

[Special Test Certificate](#)

Shipping Approval



BUREAU VERITAS



DNV



GL



LRS



PRS



RMRS

other

[Confirmation](#)

[Declaration of Conformity](#)

[other](#)

[Environmental Confirmations](#)

Further information:

Information- and Downloadcenter (Catalogs, Brochures,...)

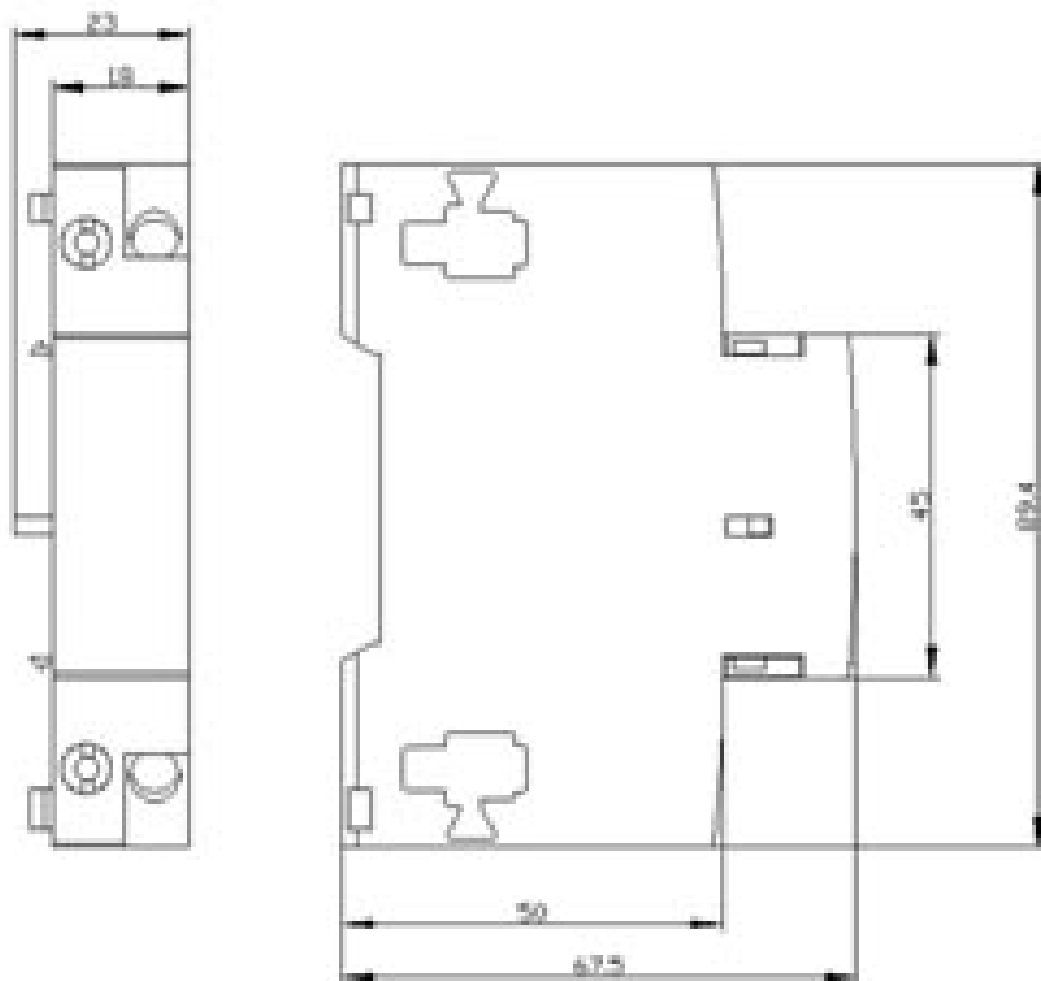
<http://www.siemens.com/industrial-controls/catalogs>

Industry Mall (Online ordering system)

<http://www.siemens.com/industrial-controls/mall>

CAX-Online-Generator

<http://www.siemens.com/cax>



last change: