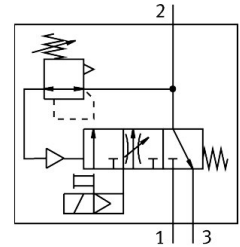


# Soft start/quick exhaust valve MS9-SV

Part number: 562176

FESTO



General operating condition

## Data sheet

Overall data sheet – Individual values depend upon your configuration.

Feature	Value
Series	MS
Size	9
Width dimension	90 mm
Safety function	Exhausting
Performance Level (PL)	Exhaust/up to category 1, performance level c
Structural design	Piston gate valve
Actuation type	Electrical
Sealing principle	Soft
Exhaust air function	Without flow control option
Manual override	None At pilot control air solenoid valve: non-detenting, at soft start/quick exhaust valve: detenting, self-resetting
Reset method	Mechanical spring
Type of control	Pilot-controlled
Symbol	00995240
Valve function	Pressure build-up function
Operating pressure	0.35 MPa ... 1.6 MPa
Operating pressure	3.5 bar ... 16 bar
Pressure gauge	G1/4 prepared G1/8 prepared Red-green scale with pressure sensor with pressure gauge with switch indicator
Standard nominal flow rate	8300 l/min ... 16550 l/min
Duty cycle	100%
Coil characteristics	110 V AC: 50/60 Hz, initial power 14.5 VA, holding power 10.5 VA 230 V AC: 50/60 Hz, initial power 14.5 VA, holding power 10.5 VA 24 V DC: 2.7 W 24 V DC: 8.4 W
Nominal operating voltage DC	230 V
Permissible voltage fluctuations	+/- 10 %
Operating medium	Compressed air as per ISO 8573-1:2010 [7:4:4]
Information on operating and pilot media	Operation with oil lubrication possible (required for further use)

Feature	Value
Corrosion resistance class (CRC)	2 - Moderate corrosion stress
Note on materials	RoHS-compliant
LABS (PWIS) conformity	VDMA24364-B1/B2-L
Degree of protection	IP65
Temperature of medium	0 °C ... 60 °C
Ambient temperature	0 °C ... 60 °C
Storage temperature	0 °C ... 60 °C
Shock resistance	Shock test with severity level 1 as per FN 942017-5 and EN 60068-2-27
Vibration resistance	Transport application test with severity level 1 as per FN 942017-4 and EN 60068-2-6
Certification	c UL us - Recognized (OL)
CE marking (see declaration of conformity)	As per EU EMC directive as per EU machinery directive As per EU RoHS directive
UKCA marking (see declaration of conformity)	To UK instructions for EMC To UK instructions for machines To UK RoHS instructions
Type of mounting	With accessories
Mounting position	Any
Pressure gauge connection	G1/8 G1/4
Electrical connection	Form A Plug as per EN 175301-803 Rectangular design
Housing material	Die-cast aluminum
Seals material	NBR
Piston slide material	Brass
Cover material	Wrought aluminum alloy
Lower cover material	PA