

ELECTRONIC TIME COUNTER DC 12-150V, 24-240V,  
50HZ ELECTRICAL RESET

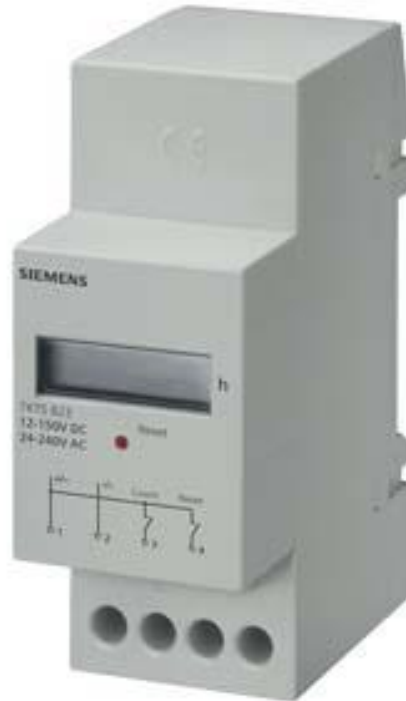


Figure similar

Model		
product brandname		SETRON
Type of the driving mechanism		others
General technical data		
Electrical input frequency / minimum	Hz	60
Electrical input frequency / maximum	Hz	60
Manner of function / of the operating hours counter		digital
Reset function		yes
Protection class		
Protection class IP		IP20
Number		
Number of characters that can be displayed		7
Mechanical Design		
Height	mm	90
Height / of the front plate	mm	45
Width	mm	36

Installation depth	mm	64
Number of width units		2
Mounting type		DIN rail
Net weight	g	87

General Product Approval

Declaration of Conformity



## Further information

**Information- and Downloadcenter (Catalogs, Brochures,...)**

<http://www.siemens.com/lowvoltage/catalogs>

**Industry Mall (Online ordering system)**

<https://eb.automation.siemens.com/mall/en/WW/Catalog/Product/7KT5822>

**Service&Support (Manuals, Certificates, Characteristics, FAQs,...)**

<http://support.automation.siemens.com/WW/view/en/7KT5822/all>

**Image database (product images, 2D dimension drawings, 3D models, device circuit diagrams, ...)**

[http://www.automation.siemens.com/bilddb/cax\\_en.aspx?mlfb=7KT5822](http://www.automation.siemens.com/bilddb/cax_en.aspx?mlfb=7KT5822)

**CAX-Online-Generator**

<http://www.siemens.com/cax>

**Tender specifications**

<http://www.siemens.com/specifications>

