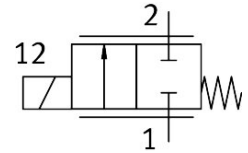



Proportional directional control valve VPWS-1-B-6-PC15-10-V

Part number: 8186783

FESTO



 General operating condition

Data sheet

Feature	Value
Nominal width	1 mm
Actuation type	Electrical
Sealing principle	Soft
Mounting position	Any
Structural design	Directly controlled poppet valve
Reset method	Mechanical spring
Type of control	Direct
Flow direction	Non-reversible
Symbol	00995954
Valve function	2/2 proportional directional control valve, closed
Operating pressure	0 MPa ... 1 MPa
Operating pressure	0 bar ... 10 bar
Nominal operating pressure	1 MPa
Nominal operating pressure	10 bar
Nominal operating pressure	145 psi
Burst pressure	3 MPa
Burst pressure	30 bar
Burst pressure	435 psi
Standard flow rate	68 l/min ... 88 l/min
Hysteresis	16 mA
Max. switching frequency	18 Hz
Current regulating range	0 mA ... 200 mA
Max. electrical power consumption	2.5 W
Coil resistance	60.5 Ohm
Duty cycle	100% (see operating instructions)
Oxygen suitability according to standard	ISO 15001
Biocompatibility according to standard	ISO 18562
Impurity level, hydrocarbons maximum	550 mg/m ²
Vibration resistance	Transport application test with severity level 1 as per FN 942017-4 and EN 60068-2-6
Note on vibration resistance	Oscillation in the Z-direction can lead to flow fluctuation
Shock resistance	Shock test with severity level 1 as per FN 942017-5 and EN 60068-2-27
Note on shock resistance	A shock in the Z-direction can lead to flow fluctuation
Corrosion resistance class (CRC)	1 - Low corrosion stress
LABS (PWIS) conformity	VDMA24364 zone III

Feature	Value
Medium	Inert gas Air Oxygen
Information on medium	Operation with oil lubrication not possible Maximum particle size 10 µm
Temperature of medium	5 °C ... 50 °C
Degree of protection	IP60
Note on degree of protection	IP65 with suitable plug In mounted state
Ambient temperature	5 °C ... 50 °C
Storage temperature	-40 °C ... 80 °C
Product weight	23 g
Electrical connection 1, connection type	Cable
Electrical connection 1, connection technology	Open end
Electrical connection 1, number of pins/wires	2
Cable length	0.07 m ... 0.08 m
Type of mounting	With accessories
Pneumatic connection 1	Cartridge 15 mm
Pneumatic connection 2	Cartridge 7.2 mm
Note on materials	RoHS-compliant
Seals material	FPM
Housing material	High-alloy steel