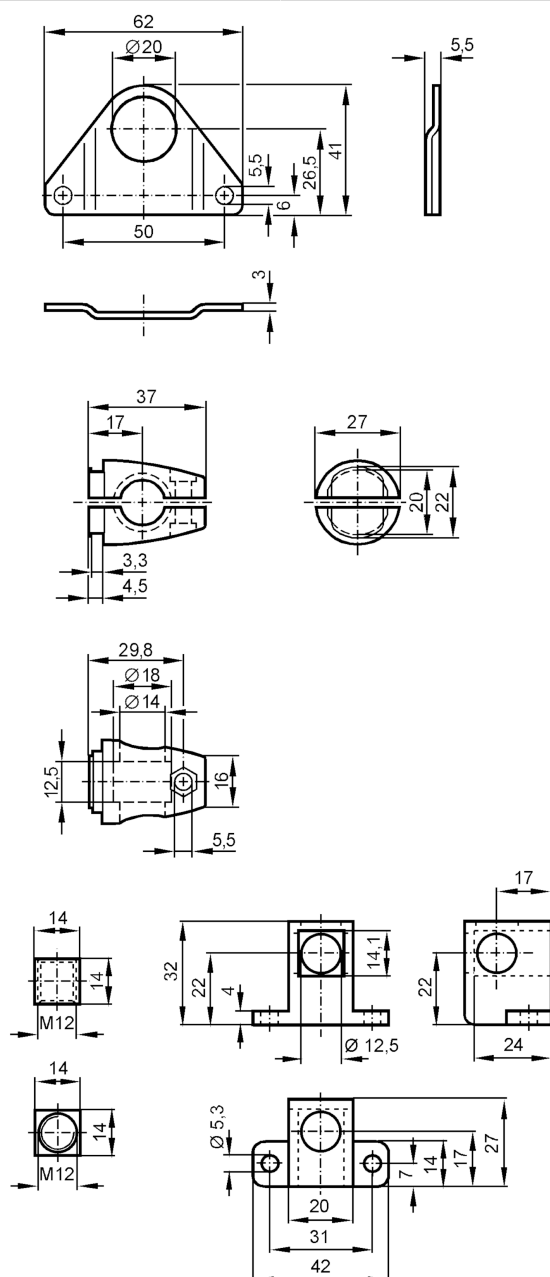


Mounting set for photoelectric sensors

SYSTEM COMPONENT OL RAIL



Application	
Design	clamp mounting
Mechanical data	
Weight [g]	362.8
Type of mounting	aluminium profile
Materials	Clamp: diecast zinc; fixture: stainless steel (1.4571/316Ti); CUBE: diecast zinc
Accessories	
Accessories (supplied)	screw: 1 x M12 x 120
Remarks	
Notes	discontinued article
Pack quantity	1 pcs.