

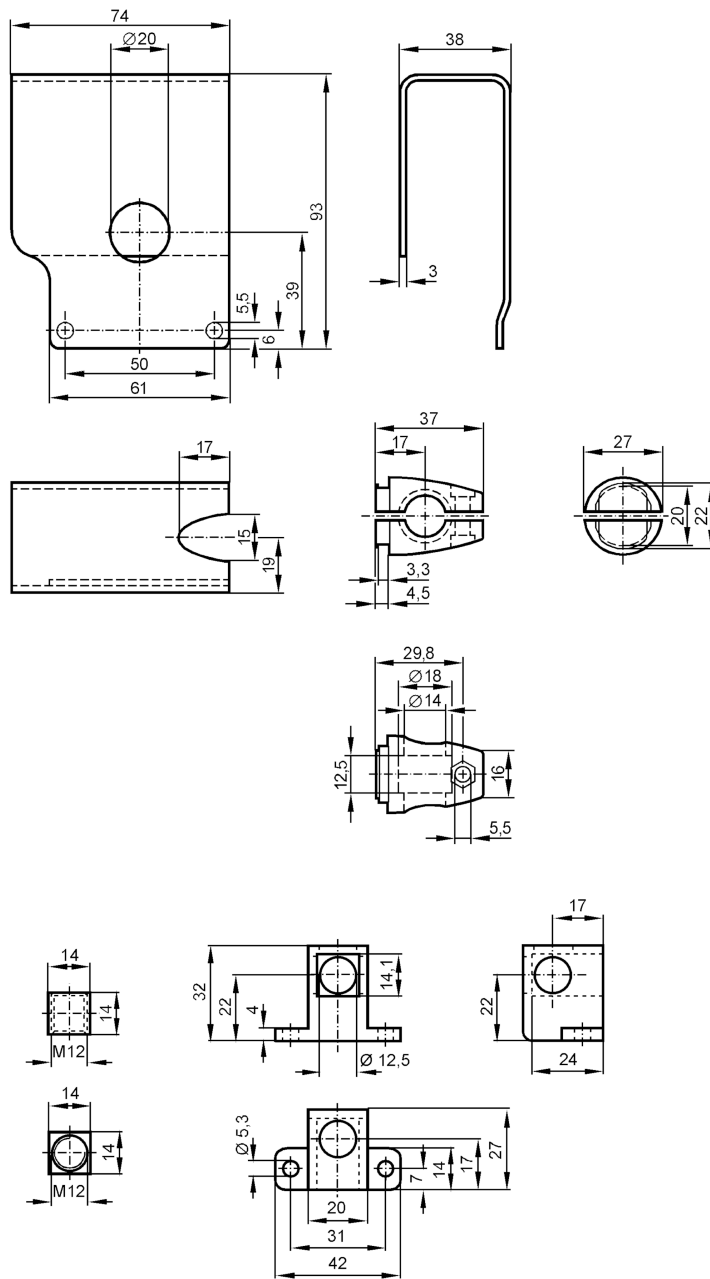
E20881



Mounting set with protective cover for photoelectric sensors

SYSTEM COMPONENT OL RAIL

Status Archive



Application

Design	clamp mounting
--------	----------------

Mechanical data

Weight	[g]	623.6
--------	-----	-------

Type of mounting	aluminium profile
------------------	-------------------

Materials	Clamp: diecast zinc; fixture: stainless steel (1.4571/316Ti); CUBE: diecast zinc
-----------	---

Accessories

Accessories (supplied)	screw: 1 x M12 x 120
------------------------	----------------------

E20881



Mounting set with protective cover for photoelectric sensors

SYSTEM COMPONENT OL RAIL

Remarks	
Notes	discontinued article
Pack quantity	1 pcs.

Status Archive