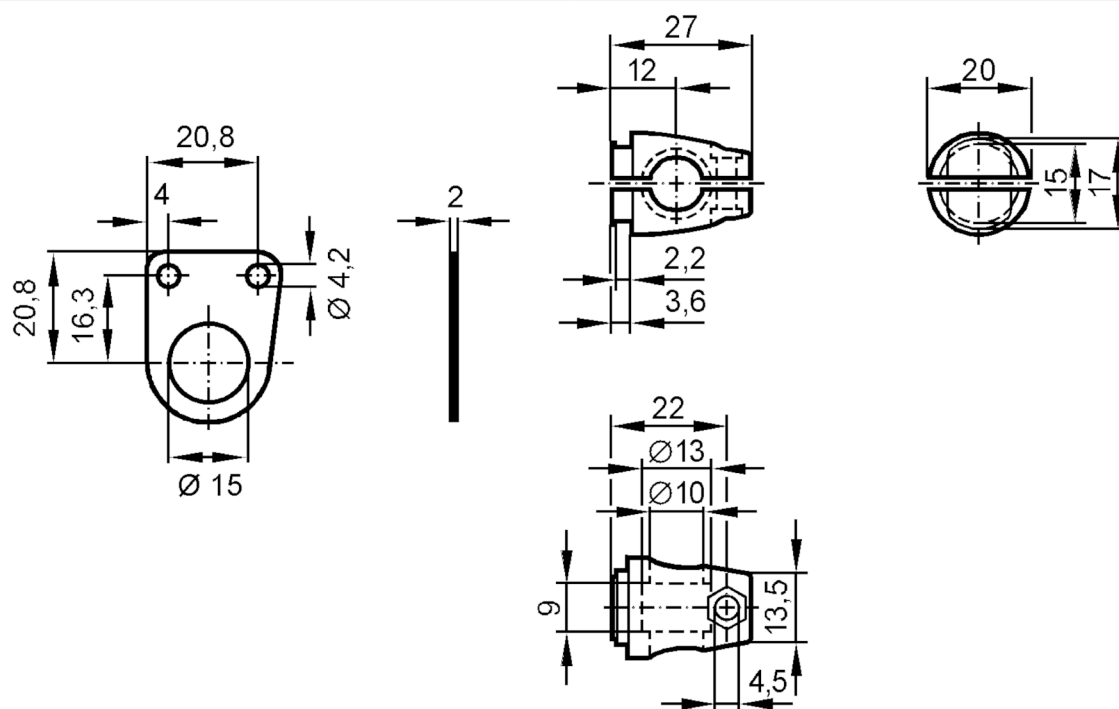




## Mounting set for photoelectric sensors

SYSTEM COMPONENT OC BOLT

Status Archive



## Application

Design clamp mounting

## Mechanical data

Weight [g] 86.8

Type of mounting free-standing; (M8)

Materials fixture: stainless steel (1.4571/316Ti ); Clamp: diecast zinc

## Accessories

Accessories (supplied) screw: 1 x M8 x 40

## Remarks

Pack quantity 1 pcs.

Status Archive