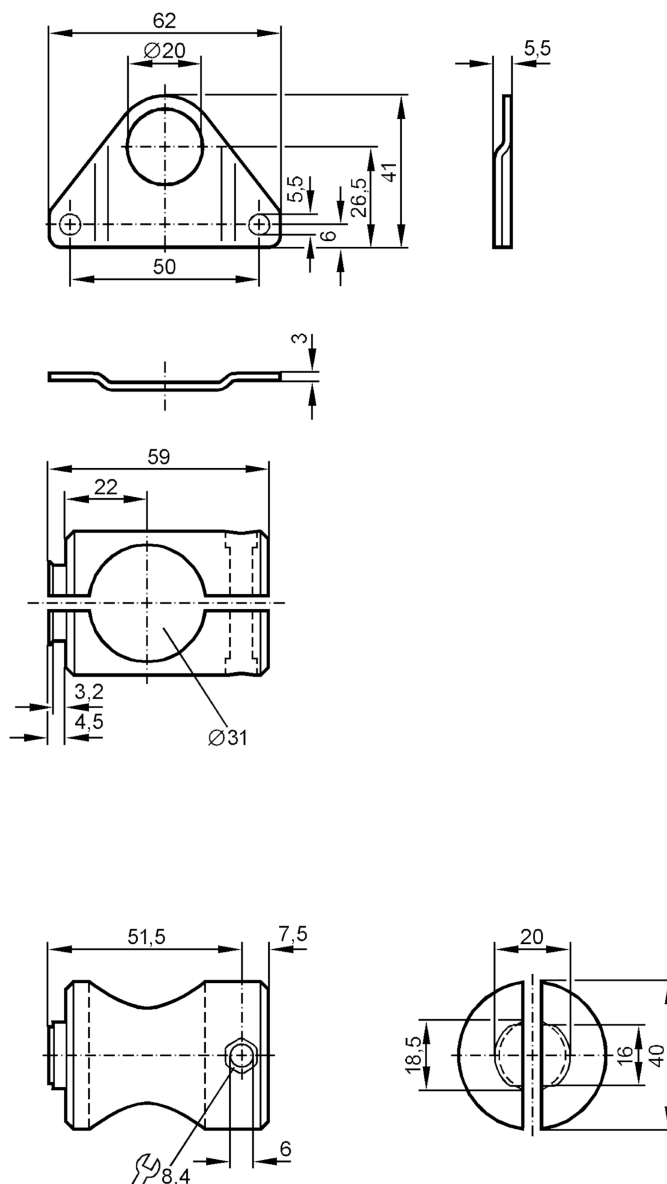




Mounting set for photoelectric sensors

MOUNTING SET OL ROD

Status Archive



Application

Design clamp mounting

Mechanical data

Weight	[g]	176.8
Type of mounting		Mounting rod; (Ø 30 mm)
Materials		fixture: stainless steel (1.4571/316Ti); Clamp: aluminium uncoloured anodised

Remarks

Notes	discontinued article
Pack quantity	1 pcs.

Status Archive