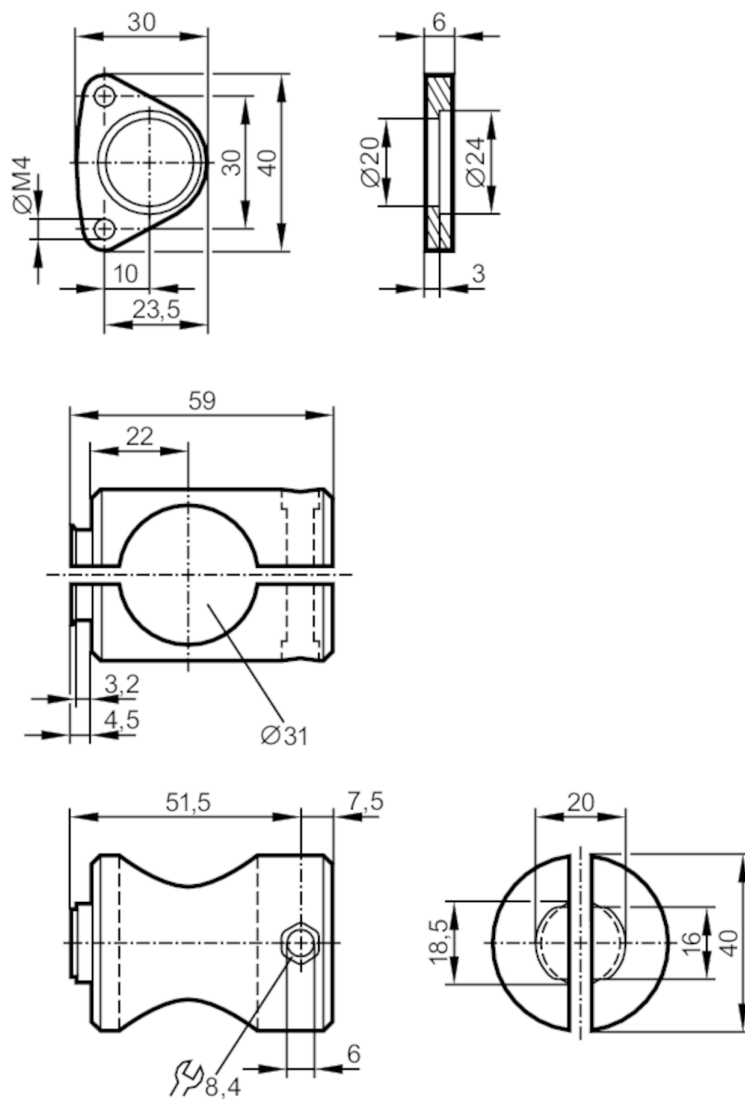


## Mounting set for photoelectric distance sensors

MOUNTING SET O1D 30MM



## Application

Design

clamp mounting

## Mechanical data

Weight

[g]

158

Type of mounting

Mounting rod; (Ø 30 mm)

Materials

fixture: stainless steel (1.4571/316Ti); Clamp: aluminium  
 uncoloured anodised; screws: stainless steel; nut: stainless steel

## Accessories

Accessories (supplied)

socket head screws: 2 x M4 x 45

## Remarks

Pack quantity

1 pcs.