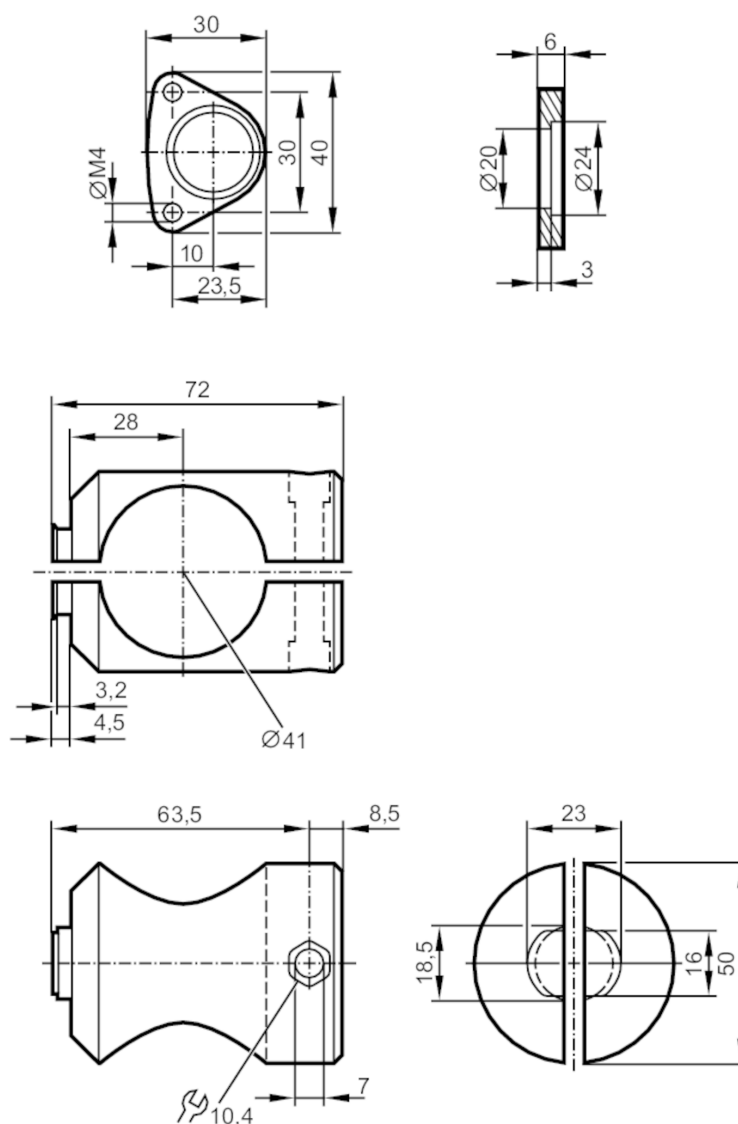


Mounting set for photoelectric distance sensors

MOUNTING SET O1D D40



Application

Design

clamp mounting

Mechanical data

Weight

[g]

238.2

Type of mounting

Mounting rod; (\varnothing 40 mm)

Materials

fixture: stainless steel (1.4571/316Ti); Clamp: aluminium
 uncoloured anodised; screws: stainless steel; nut: stainless steel

Accessories

Accessories (supplied)

socket head screws: 2 x M4 x 45

Remarks

Pack quantity

1 pcs.