

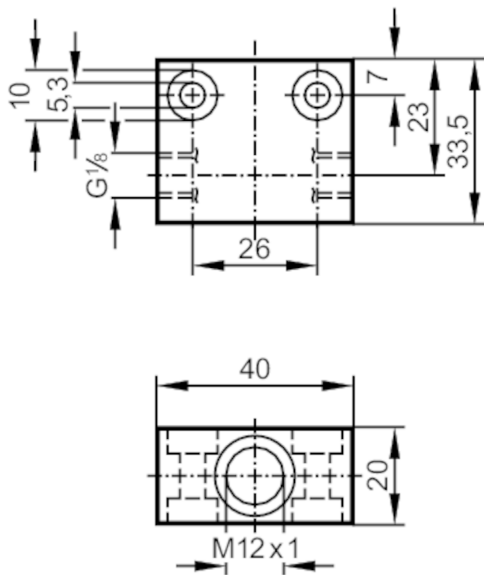
# E40130



## Process adapter for small volumetric flow quantities

FLOW ADAPT SI TI

Status Archive



### Application

Design	for flow sensors and flow monitors mit_Adapter_singular
Installation	via internal G1/8A male thread, any mounting position
Medium temperature [°C]	0...80; (Temperature gradient: 1 K/min)
Pressure rating [bar]	30

### Measuring/setting range

Flow range [ml/min]	2...100
---------------------	---------

### Mechanical data

Weight [g]	92.8
Dimensions [mm]	M12 x 1
Thread designation	M12 x 1
Materials	titanium (3.7235)

### Remarks

Notes	discontinued article
Pack quantity	1 pcs.

Status Archive