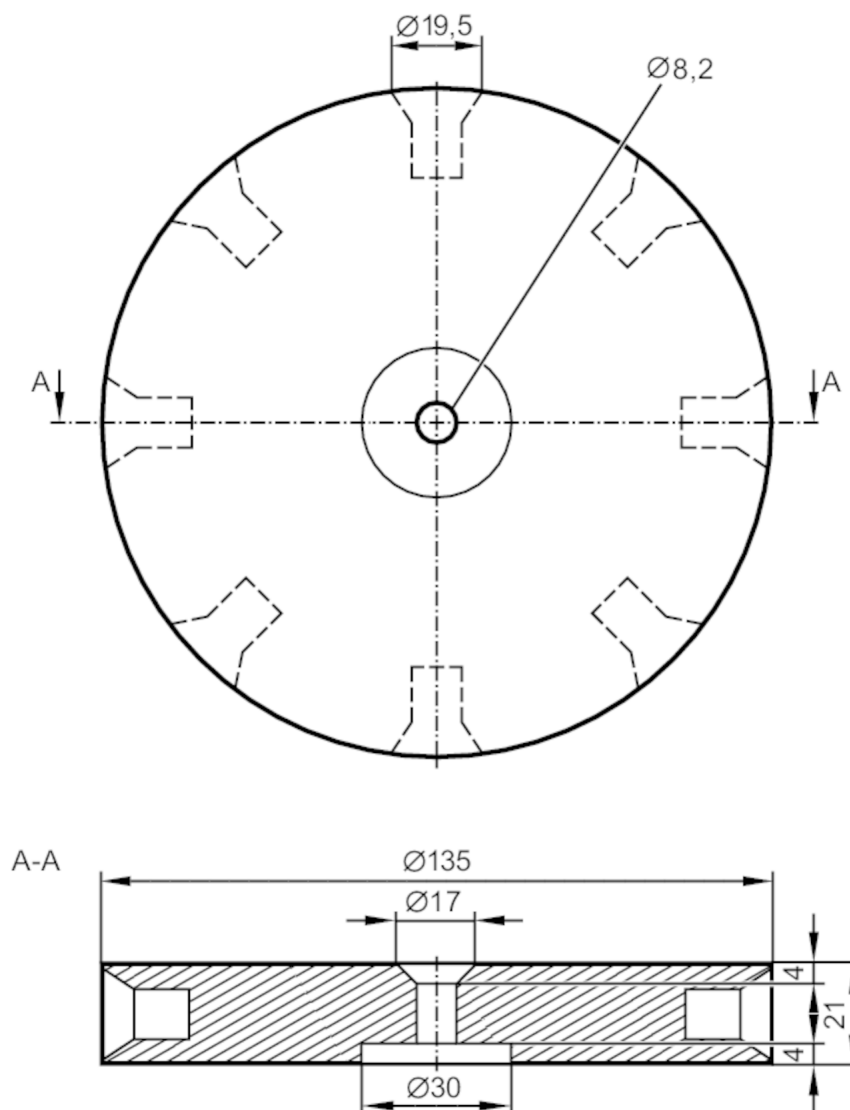


# E89010



## Cam wheel

TARGET WHEEL/8,2mm



### Application

Application

for detection of very low rotational speeds and conversion to a higher pulse number per minute; with even mark-to-space ratio ; e.g. for the use of a frequency-to-current converter

### Mechanical data

Weight [g]

492.5

Dimensions [mm]

135 x 135 x 21

Materials

disc: Delrin; screws: CK 45

### Remarks

Remarks

The socket head screws can be removed to reduce the number of cams.