



70 RT HP is a complete offer of rotary isolator switches from 16 A to 160 A, available in boxes both in insulating material and aluminium, in control or emergency versions, compatible with the main applications for residential, tertiary and industrial contexts.

DC versions for photovoltaic applications are also available from 16 A to 40 A in insulating box.

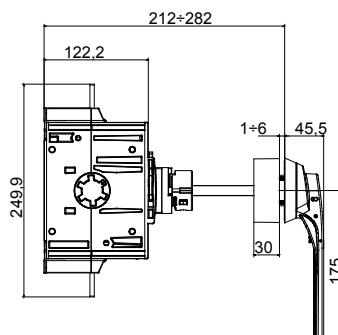
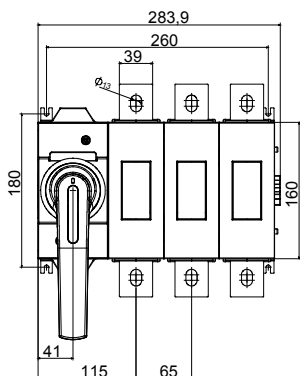
The series is completed with versions for board from 16 A to 1000 A and for DIN rail fixing from 16 A to 63 A, which can be equipped with auxiliary contacts.

The devices have been designed to reduce wiring time, facilitate installation and guarantee the maximum safety and robustness even in the most demanding conditions.

ELECTRICAL CHARACTERISTICS

| Circuit breaker | Rotary isolator | Version | For board |
|--|-----------------------|-------------------------|--|
| Rated current (A) | 800 | No. of modules EN 50022 | 16 |
| No. of poles | 3P | Regulation field | 212 - 282 mm |
| Rated operational current AC-21A (415 V) (A) | 800 | Type | Control |
| Rated operational current AC-22A (415 V) (A) | 800 | Knob colour | Black |
| Rated operational current AC-23A (415 V) (A) | 800 | Lockable | YES (max. 3 locks in OFF) |
| Power dissipation per pole | 40 W/pole | ACCESSORIES | |
| Cable section | 2x240 mm ² | Type of accessory | Max. 8 auxiliary contacts (4 per side) |

DIMENSIONAL



STANDARDS/APPROVALS

