



### Main

Range of product	Altivar
Product or component type	EMC input filter
Range compatibility	Altivar Process ATV600 Altivar Process ATV900
Product compatibility	Variable speed drive ATV630 wall mount, motor : 160 kW, 380...480 V Variable speed drive ATV630 wall mount, motor : 75 kW, 200...240 V Variable speed drive ATV930 wall mount, motor : 160 kW, 380...480 V Variable speed drive ATV930 wall mount, motor : 75 kW, 200...240 V
Product specific application	Radio interference input filter
[In] rated current	305 A
Network number of phases	Three phase

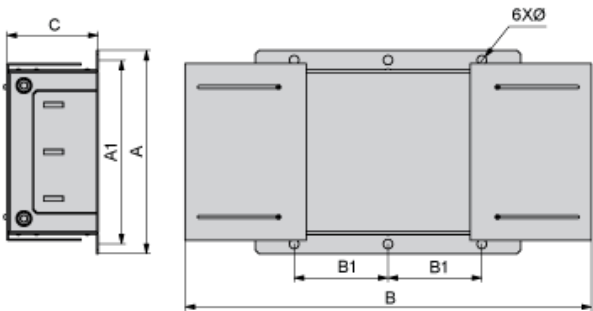
### Complementary

Electrical connection	Copper bar M12
Motor cable length	<= 150 m shielded motor cable 2.5 kHz conforming to EN/IEC 61800-3 category C2, 380...480 V <= 300 m shielded motor cable 2.5 kHz conforming to EN/IEC 61800-3 category C3, 380...480 V <= 50 m shielded motor cable 2.5 kHz conforming to EN/IEC 61800-3 category C2, 200...240 V <= 150 m shielded motor cable 2.5 kHz conforming to EN/IEC 61800-3 category C3, 200...240 V
Maximum earth leakage current	27.8 mA at 400 V 50 Hz TN 27.8 mA at 400 V 50 Hz TT
Power supply voltage	200...240 V 380...480 V
Tolerance	10 %
Mechanical robustness	Shocks conforming to IEC 60721-3-3 class 3M4 Vibrations conforming to IEC 60721-3-3 class 3M4
Width	260 mm
Height	520 mm
Depth	117 mm
Product weight	17 kg

### Environment

IP degree of protection	IP00
Relative humidity	5...95 % without condensation conforming to IEC 61800-5-1
Ambient air temperature for operation	-10...50 °C without current derating 50...60 °C with current derating 1.5 % per °C
Ambient air temperature for storage	-40...70 °C
Operating altitude	0...1000 m without current derating 1000...4000 m with current derating 1 % per 100 m
Standards	EN/IEC 61800-3

Dimensions



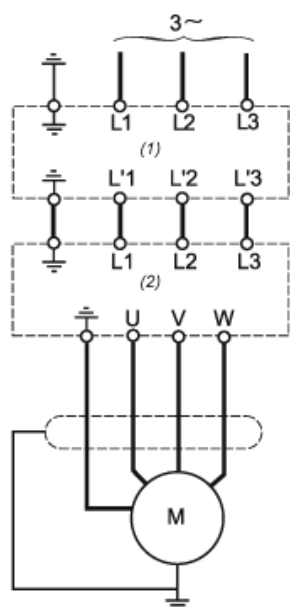
Dimensions in mm

A	B	C	A1	B1	Ø
260	520	117	235	120	12

Dimensions in in.

A	B	C	A1	B1	Ø
10.2	20.4	4.6	9.3	4.7	0.47

### Recommended Schema



- (1) Filter
- (2) Drive