



Main

Product or component type	Sinus filter
Range compatibility	Altivar Process ATV600 Altivar Process ATV900
Product specific application	Output filter

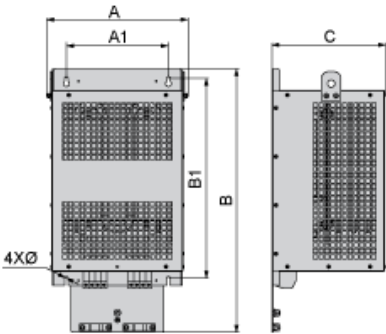
Complementary

Motor cable length	<= 1000 m unshielded cable <= 500 m shielded cable
[In] rated current	6 A
Thermal losses	40 W at 4 kHz
Product compatibility	Variable speed drive ATV630 wall mount, motor: 0.75 kW, 380...480 V Variable speed drive ATV630 wall mount, motor: 1.5 kW, 380...480 V Variable speed drive ATV630 wall mount, motor: 2.2 kW, 380...480 V Variable speed drive ATV630 wall mount, motor: 0.75 kW, 200...240 V Variable speed drive ATV650 wall mount, motor: 0.75 kW, 380...480 V Variable speed drive ATV650 wall mount, motor: 1.5 kW, 380...480 V Variable speed drive ATV650 wall mount, motor: 2.2 kW, 380...480 V Variable speed drive ATV930 wall mount, motor: 0.75 kW, 380...480 V Variable speed drive ATV930 wall mount, motor: 1.5 kW, 380...480 V Variable speed drive ATV930 wall mount, motor: 2.2 kW, 380...480 V Variable speed drive ATV930 wall mount, motor: 0.75 kW, 200...240 V Variable speed drive ATV950 wall mount, motor: 0.75 kW, 380...480 V Variable speed drive ATV950 wall mount, motor: 1.5 kW, 380...480 V Variable speed drive ATV950 wall mount, motor: 2.2 kW, 380...480 V
Electrical connection	Terminal block, connection capacity: 4 mm ² / AWG 12
Operating altitude	<= 1000 m without current derating 1000...4000 m with current derating 1 % per 100 m
Switching frequency	2...8 kHz
Output frequency	<= 100 Hz
Voltage drop at rated load	< 8 %
Permissible voltage	<= 480 V AC
Max current	1.20 x nominal current for 60 s
Width	210 mm
Height	455 mm
Depth	210 mm
Product weight	10 kg

Environment

IP degree of protection	IP20 IP21 with kit VW3A53901
Environmental characteristic	Biological pollution resistance class 3B1 conforming to IEC 60721-3-3 Chemical pollution resistance class 3C3 conforming to IEC 60721-3-3 Dust pollution resistance class 3S3 conforming to IEC 60721-3-3
Pollution degree	2 conforming to IEC 61800-5-1
Relative humidity	5...95 % without condensation
Ambient air temperature for operation	50...60 °C with current derating 1.5 % per °C -15...50 °C without current derating
Ambient air temperature for storage	-40...70 °C
Mechanical robustness	Shocks conforming to IEC 60721-3-3 class 3M4 Vibrations conforming to IEC 60721-3-3 class 3M4

Dimensions



Dimensions in mm

A	B	C	A1	B1	Ø
210	445	210	160	351	7

Dimensions in in.

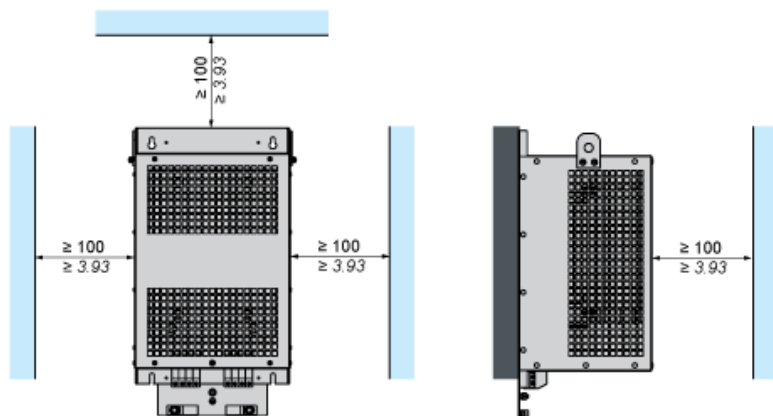
A	B	C	A1	B1	Ø
8.3	17.5	8.3	6.3	13.8	0.28

Mounting and Clearance

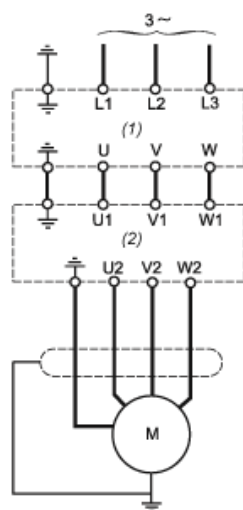


(1) Filter

$\frac{\text{mm}}{\text{in.}}$



Recommended Schema



- (1) Drive
(2) Filter