

XAPA2108

empty control station - XAP-A - plastic - 8
openings in 2 columns



Main

Range of product	Harmony XAP
Product or component type	Empty control station without hinges
Device short name	XAPA
Product destination	For Ø 22 mm control and signalling units
Product front plate size	85 x 226 mm
Usable depth	83 mm
Number of cut-out	8 cut-outs
Colour of base of enclosure	Grey
Colour of cover	Grey
Material	Glass reinforced polyester
Cable entry	Undrilled
Product mounting	Flush mounting
IP degree of protection	IP657 conforming to NF C 20-010 IP65 conforming to IEC 60529
Resistance to chemical agents	High resistant to sea water High resistant to petrol High resistant to oils and greases High resistant to mineral salts High resistant to diesel High resistant to bases High resistant to all solvents High resistant to acids

Complementary

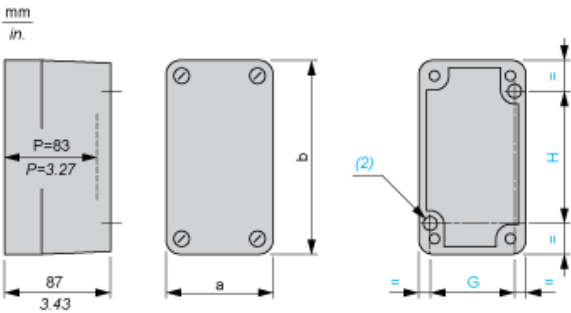
Number of vertical rows	2
Flame retardance	VO conforming to UL 94 M3 conforming to CSTB
Product weight	0.58 kg

Environment

Protective treatment	TC TH
Ambient air temperature for storage	-40...70 °C
Ambient air temperature for operation	-25...70 °C
Class of protection against electric shock	Class II conforming to NF C 20-030 Class II conforming to IEC 60536
Fire resistance	960 °C conforming to IEC 92 850 °C conforming to NF C 20-455

The information provided in this documentation contains general descriptions and/or technical characteristics of the products contained herein. This documentation is not intended as a substitute for and is not to be used for determining suitability or reliability of these products for specific user applications. It is the duty of any such user or integrator to perform the appropriate and complete risk analysis, evaluation and testing of the products with respect to the relevant specific application or use thereof. Neither Schneider Electric Industries SAS nor any of its affiliates or subsidiaries shall be responsible or liable for misuse of the information contained herein.

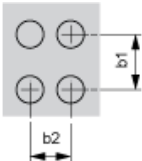
Dimensions and Fixing



- (1) 11 mm/0.43 in.
 (2) 2 x Ø 5.6 mm/0.22 in. holes, depth 12 mm/0.47 in.
 P Usable depth

a		b		G		H	
mm	in.	mm	in.	mm	in.	mm	in.
85	3.35	226	8.90	70	2.76	180	7.09

Refer to the product characteristics to get the number of cut-outs.
 Cut-out interaxis dimensions (vertical mounting)



- b1 Vertical interaxis: 40 mm/1.57 in.
 b2 Horizontal interaxis: 30 mm/1.18 in.