



## Main

|                                    |                                  |
|------------------------------------|----------------------------------|
| Range of product                   | OsiSense XS                      |
| Series name                        | Application                      |
| Sensor type                        | Inductive proximity sensor       |
| Device application                 | -                                |
| Sensor name                        | XS9                              |
| Sensor design                      | Flat form 15 x 32 x 8            |
| Size                               | 8 mm                             |
| Body type                          | Fixed                            |
| Detector flush mounting acceptance | Flush mountable                  |
| Material                           | Plastic                          |
| Enclosure material                 | PBT                              |
| Type of output signal              | Analogue                         |
| Wiring technique                   | 2-wire                           |
| [Sn] nominal sensing distance      | 5 mm                             |
| Discrete output function           | 1 NO                             |
| Output circuit type                | DC                               |
| Analogue output range              | 0...10 V                         |
| Electrical connection              | Remote male connector M8, 3 pins |
| Cable length                       | 0.15 m                           |
| [Us] rated supply voltage          | 24 V DC                          |
| IP degree of protection            | IP67 conforming to IEC 60529     |

## Complementary

|                       |              |
|-----------------------|--------------|
| Detection face        | Frontal      |
| Front material        | PBT          |
| Operating zone        | 1...5 mm     |
| Repeat accuracy       | <= 3% of Sr  |
| Linearity error       | +/- 1 V      |
| Status LED            | Without      |
| Supply voltage limits | 15...36 V DC |

|                              |                  |
|------------------------------|------------------|
| Switching frequency          | <= 2000 Hz       |
| Current consumption          | 0...4 mA no-load |
| Maximum output current drift | 10 %             |
| Marking                      | CE               |
| Depth                        | 8 mm             |
| Height                       | 32 mm            |
| Width                        | 15 mm            |

## Environment

|                                       |                                                                         |
|---------------------------------------|-------------------------------------------------------------------------|
| Product certifications                | UL<br>CSA                                                               |
| Ambient air temperature for operation | -25...70 °C                                                             |
| Ambient air temperature for storage   | -40...85 °C                                                             |
| Vibration resistance                  | 25 gn amplitude = +/- 2 mm (f = 10...55 Hz) conforming to IEC 60068-2-6 |
| Shock resistance                      | 50 gn for 11 ms conforming to IEC 60068-2-27                            |

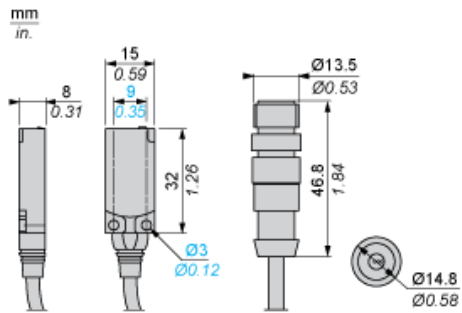
## Offer Sustainability

|                            |                                                                                                   |
|----------------------------|---------------------------------------------------------------------------------------------------|
| EU RoHS Directive          | Pro-active compliance (Product out of EU RoHS legal scope)<br><a href="#">EU RoHS Declaration</a> |
| Mercury free               | Yes                                                                                               |
| RoHS exemption information | <a href="#">Yes</a>                                                                               |

## Contractual warranty

|          |           |
|----------|-----------|
| Warranty | 18 months |
|----------|-----------|

Dimensions



---

Setting-up

---

Minimum Mounting Distances (mm)

Side by Side



$$e (1) \geq 15$$

Face to Face



$$e (2) \geq 36$$

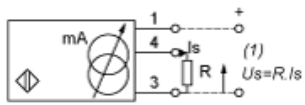
Facing a Metal Object



$$e (3) \geq 15$$

Wiring Schemes

3-Wire Connection

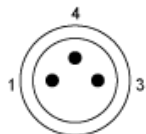


(1) Voltage output

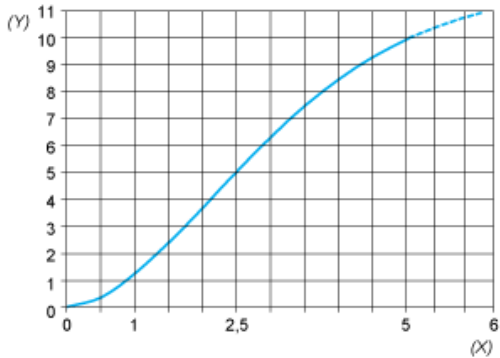
Ensure a minimum of 5 V between the + (terminal 1) and the sensor output (terminal 4)

|      | Output current | Load impedance value | Output voltage | Load impedance value |
|------|----------------|----------------------|----------------|----------------------|
| 24 V | 0...10 mA      | $R \leq 1400 \Omega$ | 0...10 V       | $R = 1000 \Omega$    |

M8



Output Curves



(Y) Us (V)  
(X) Sensors - object distance (mm)